

# FOR LEASE

# WA REA

Washington Real Estate Advisors

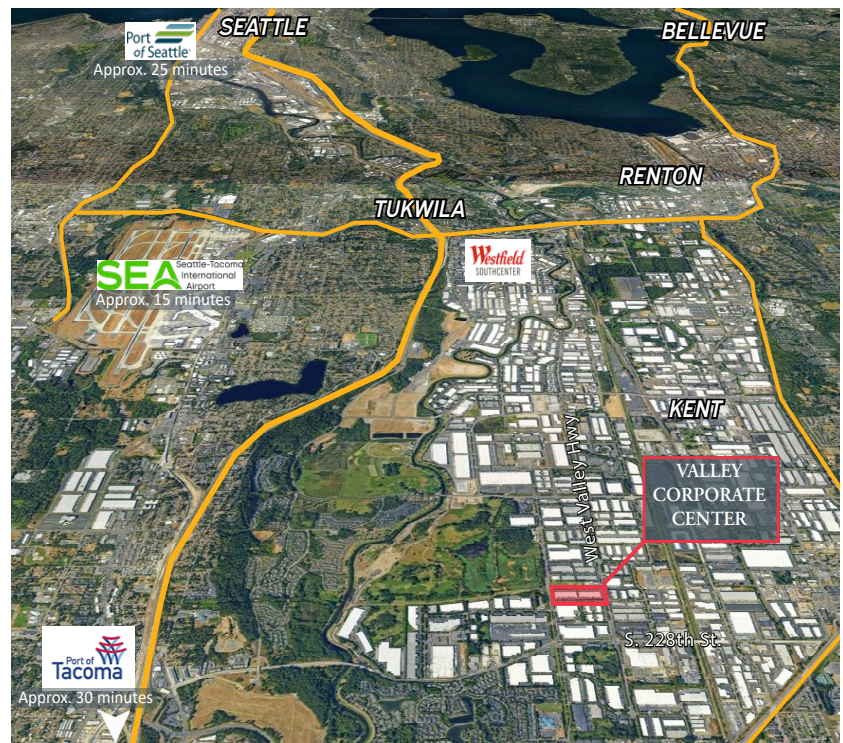


## VALLEY CORPORATE CENTER - BUILDING A

22263 68TH AVENUE SOUTH  
KENT, WASHINGTON

AVAILABLE SPACE	25,275 SF
OFFICE	7,685 SF
CLEAR HEIGHT	25'
COLUMN SPACING	51'6" x 21'4"
LOADING DOORS	8 dock-high doors 4 drive-in doors
BONUS 2 <sup>ND</sup> STORY OFFICE	7,747 SF (optional)

- Excellent North Kent Valley location with immediate freeway access to I-5, I-405 and SR-167
- Prominent frontage on W. Valley Hwy
- Endcap space
- Strong corporate image



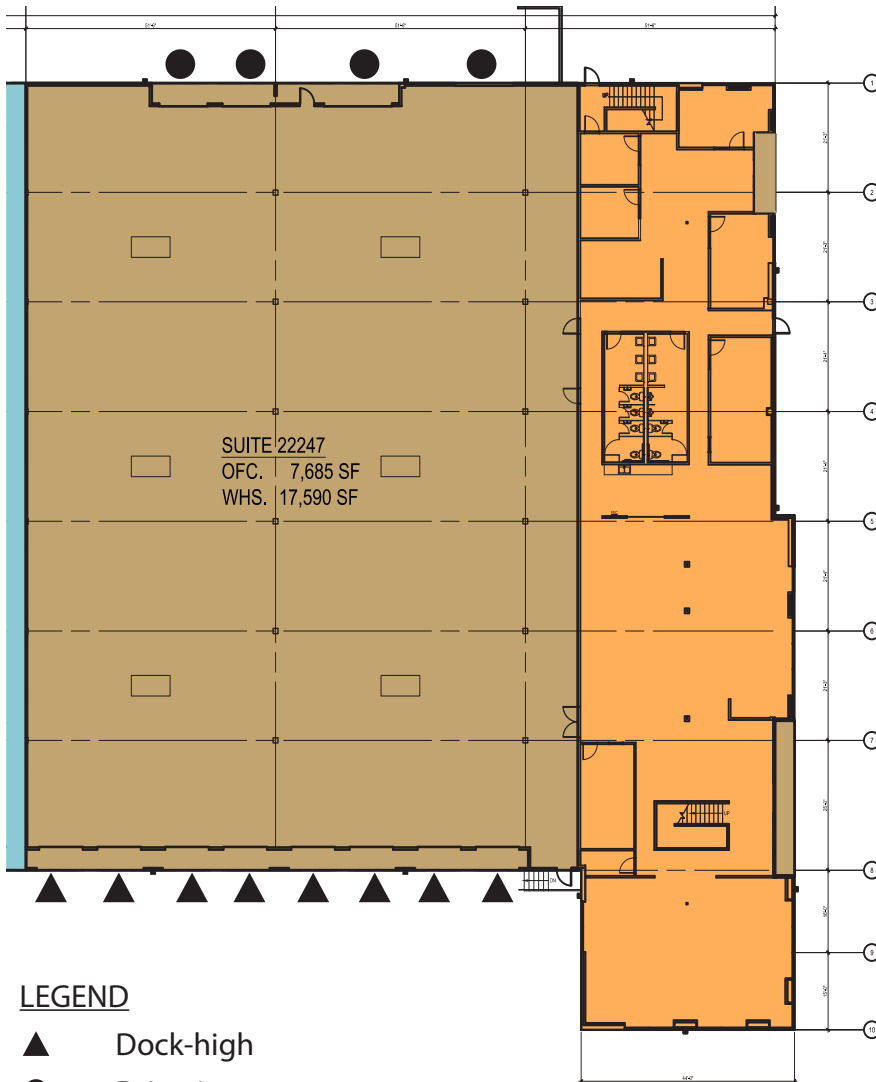
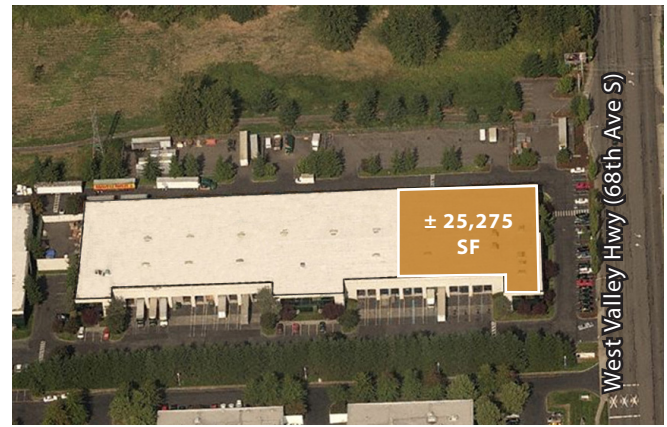
Owned by:



# FOR LEASE

## VALLEY CORPORATE CENTER - BLDG A

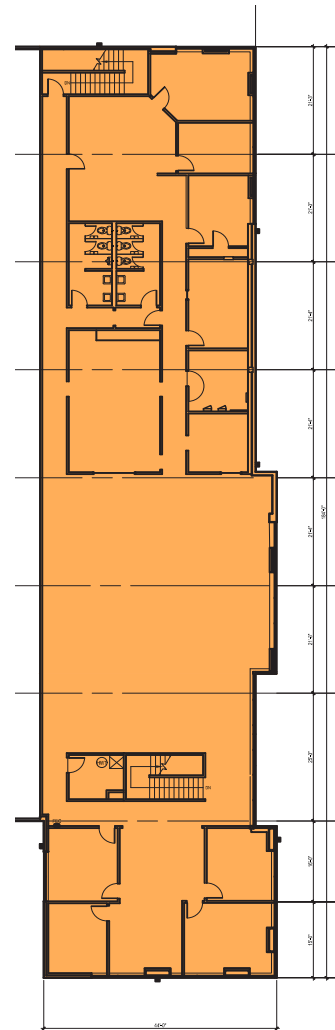
22263 68TH AVENUE S  
KENT, WASHINGTON



SUITE 22247  
OFC. 7,685 SF  
WHS. 17,590 SF

### LEGEND

- ▲ Dock-high
- Drive-in
- Warehouse Area
- Office Area



Optional 2nd Floor Office

**Wilma Warshak, SIOR**  
wilma.warshak@wa-rea.com  
P 206.838.5492  
C 206.409.1432

**Alana Garrett**  
alana.garrett@wa-rea.com  
P 206.838.5492  
C 858.722.5627

**Jackson Peterson**  
jackson.peterson@wa-rea.com  
P 206.838.5492



All information in this document including, without limitation, all descriptions, dimensions, and references to condition, use and occupation and other details relating to the advertised property ("Information") has been obtained from various sources that Washington Real Estate Advisors, LLC ("WA-REA") believes to be reliable. However, such Information is provided "as is", with no guarantee of completeness or accuracy, and without warranty of any kind, express or implied, including, without limitation, any warranties of performance, merchantability and fitness for a particular purpose. Potential purchasers or tenants are not entitled to rely on any of the Information and should satisfy themselves by appropriate inspections, surveys, searches, inquiries or otherwise with regard to the accuracy of such Information. In no event will WA-REA, or its owners, agents or employees be liable to you or anyone else for any decision made or action taken in reliance on the Information or for any consequential, special or similar damages, even if advised of the possibility of such damages. This document is for informational purposes only and is not an offer to sell or lease.