

± 30,000 SF

Industrial Space For Lease



Prologis Park Kingsport



7925 South 196th Street
Kent, WA 98032 USA

LOCATION

- Excellent North Kent Valley Location
- Quick Access to SR-167 and I-5
- Prominent frontage on 196th St.

FACILITY

- ± 30,000 SF
- ± 3,093 SF office
- ± 1,334 SF mezzanine
- ± 1,110 SF storage mezzanine
- ± 20' clear height
- 9 dock-high doors and 1 drive-in door
- ± 50' x 25' typical column spacing
- Available 3/1/2024

ADVANTAGES AND AMENITIES

- Access to the Prologis Essentials platform, which includes:

[Operations Essentials](#)

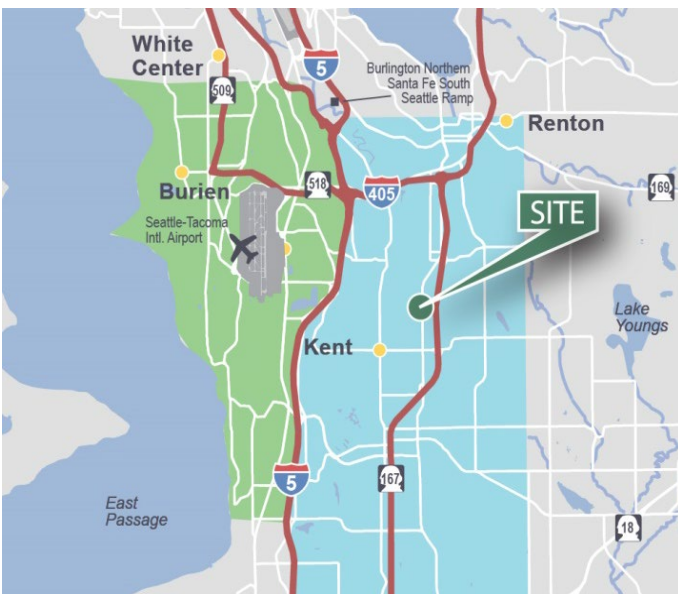
[Energy Essentials](#)

[Workforce Essentials](#)

[Mobility Essentials](#)

[Digital Essentials](#)

Your single-source service for efficient move-in and operations: [prologisessentials.com](https://www.prologisessentials.com)

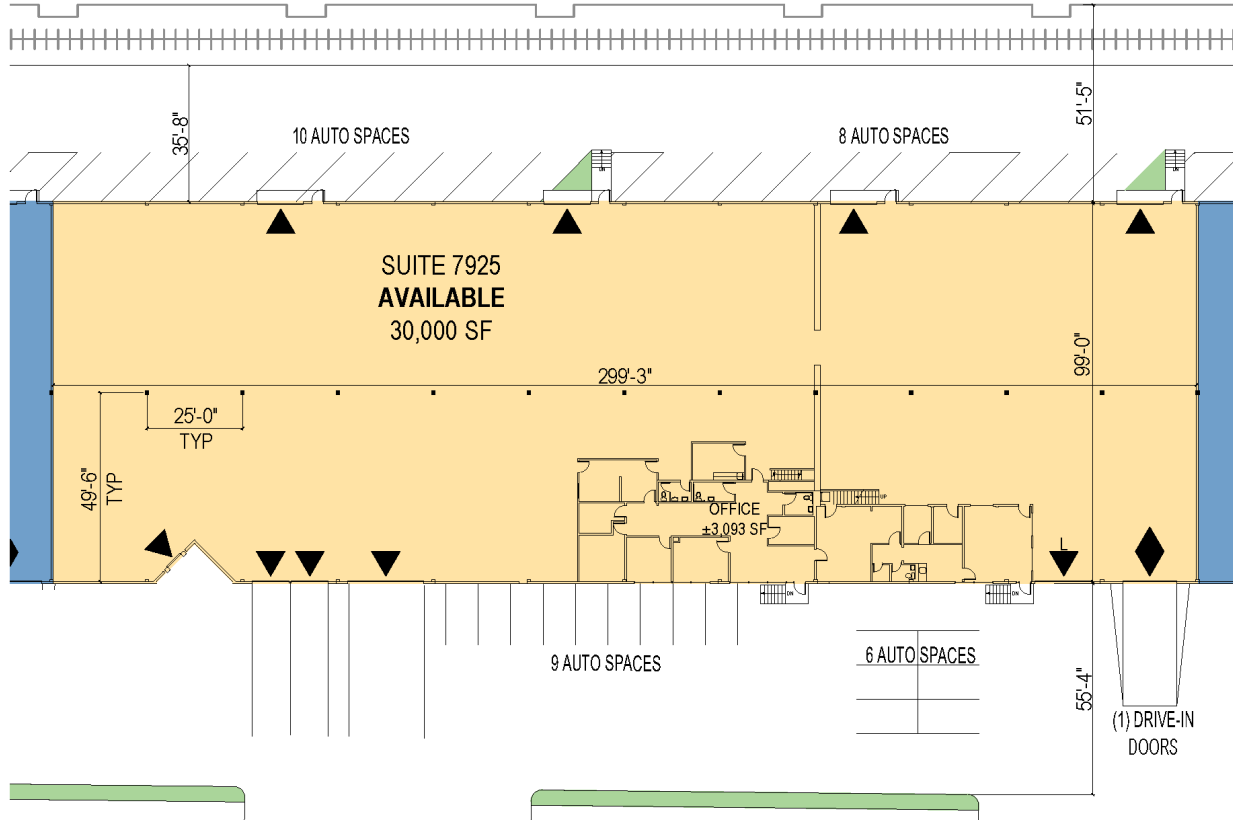


± 30,000 SF

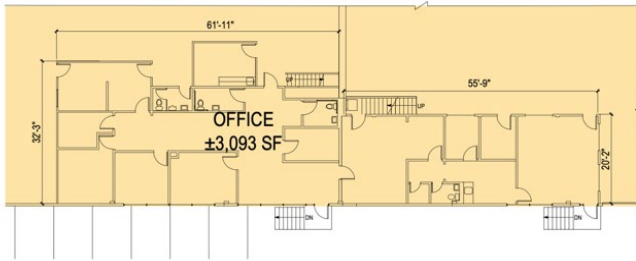
Industrial Space For Lease



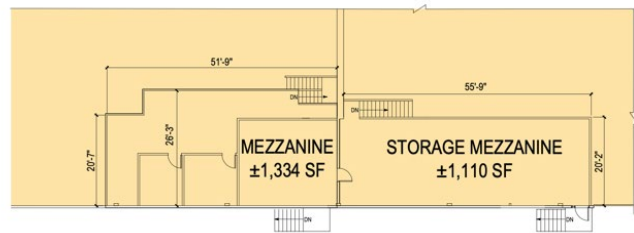
Prologis Park Kingsport



SUITE 7925 PLAN



OFFICE PLAN



MEZZANINE PLAN



WA-REA

Wilma Warshak, SIOR
wilma.warshak@wa-rea.com
ph +1 206 838 5492
cell +1 206 409 1432
2371 Eastlake Ave. East
Suite 200
Seattle, WA 98102 USA

WA-REA

Alana Garrett
alana.garrett@wa-rea.com
ph +1 206 838 5492
cell +1 858 722 5627
2371 Eastlake Ave. East
Suite 200
Seattle, WA 98102 USA

WA-REA

Jackson Peterson
jackson.peterson@wa-rea.com
ph +1 206 838 5492
cell +1 503 739 1830
2371 Eastlake Ave. East
Suite 200
Seattle, WA 98102 USA

Prologis

Lucca Merlino
lmerlino@prologis.com
ph +1 206 414 7621
cell +1 206 498 6511
5900 Airport Way South
Suite 300
Seattle, WA 98108 USA