

± 14,500 SF

Industrial Space For Lease



Prologis Park Kingsport



7819 South 196th Street
Kent, WA 98032 USA

LOCATION

- Excellent North Kent Valley Location
- Quick Access to SR-167 and I-5
- Prominent frontage on 196th St.

FACILITY

- ± 14,500 SF
- ± 2,208 SF office
- ± 20' clear height
- 6 dock-high doors
- 1 drive-in door
- ± 25' x 50' typical column spacing
- Endcap space
- Available 3/1/24

ADVANTAGES AND AMENITIES

- Access to the Prologis Essentials platform, which includes:

[Operations Essentials](#)

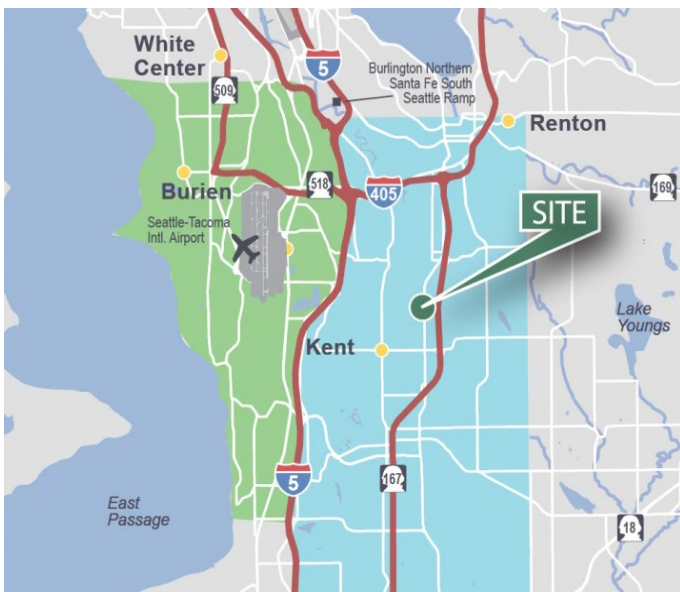
[Energy Essentials](#)

[Workforce Essentials](#)

[Mobility Essentials](#)

[Digital Essentials](#)

Your single-source service for efficient move-in and operations: [prologisessentials.com](https://www.prologisessentials.com)

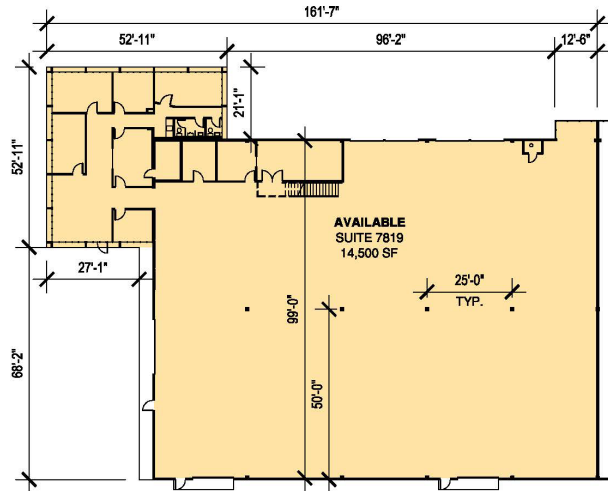


± 14,500 SF

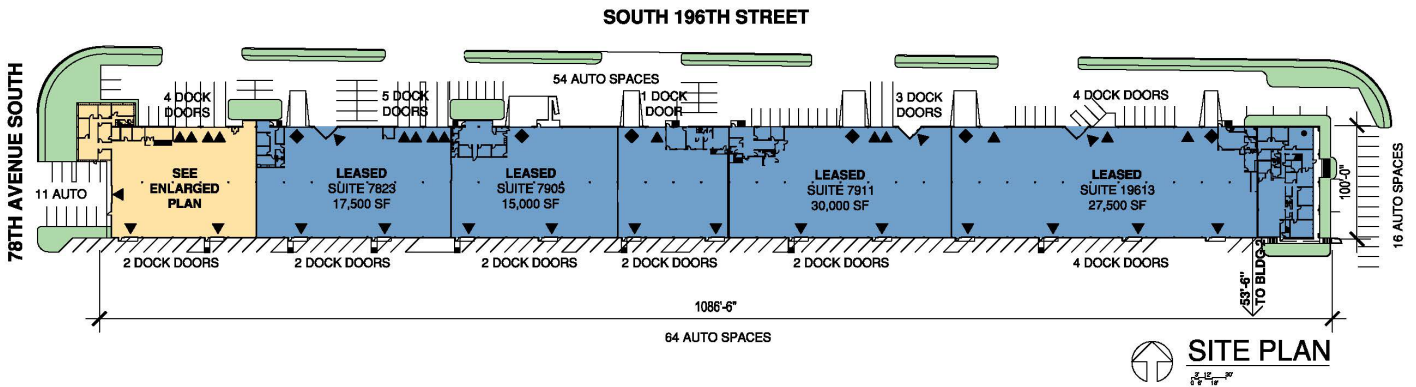
Industrial Space For Lease



Prologis Park Kingsport



SUITE 7819
0 6 12 18'



SITE PLAN
0 6 12 18'

WA-REA

Wilma Warshak, SIOR
wilma.warshak@wa-rea.com
ph +1 206 838 5492
cell +1 206 409 1432
2371 Eastlake Ave. East
Suite 200
Seattle, WA 98102 USA

WA-REA

Alana Garrett
alana.garrett@wa-rea.com
ph +1 206 838 5492
cell +1 858 722 5627
2371 Eastlake Ave. East
Suite 200
Seattle, WA 98102 USA

WA-REA

Jackson Peterson
jackson.peterson@wa-rea.com
ph +1 206 838 5492
cell +1 503 739 1830
2371 Eastlake Ave. East
Suite 200
Seattle, WA 98102 USA

Prologis

Lucca Merlino
Lmerlino@prologis.com
ph +1 206 414 7621
cell +1 206 498 6511
5900 Airport Way South
Suite 300
Seattle, WA 98108 USA