

FOR LEASE

WA REA

Washington Real Estate Advisors



VALLEY CORPORATE CENTER - BUILDING B

22217 68TH AVENUE SOUTH
KENT, WASHINGTON

AVAILABLE SPACE	58,331 SF
OFFICE/ SHOWROOM	11,483
CLEAR HEIGHT	25'
COLUMN SPACING	51'6" x 21'4" typical
LOADING DOORS	14 dock-high doors 1 drive-in doors
YARD AREA AVAILABLE	13,800 SF Paved and fenced
DATE AVAILABLE	May 2024

- Excellent North Kent Valley location with immediate freeway access to I-5, I-405, and SR-167
- Strong corporate image with street frontage and visibility
- Endcap space



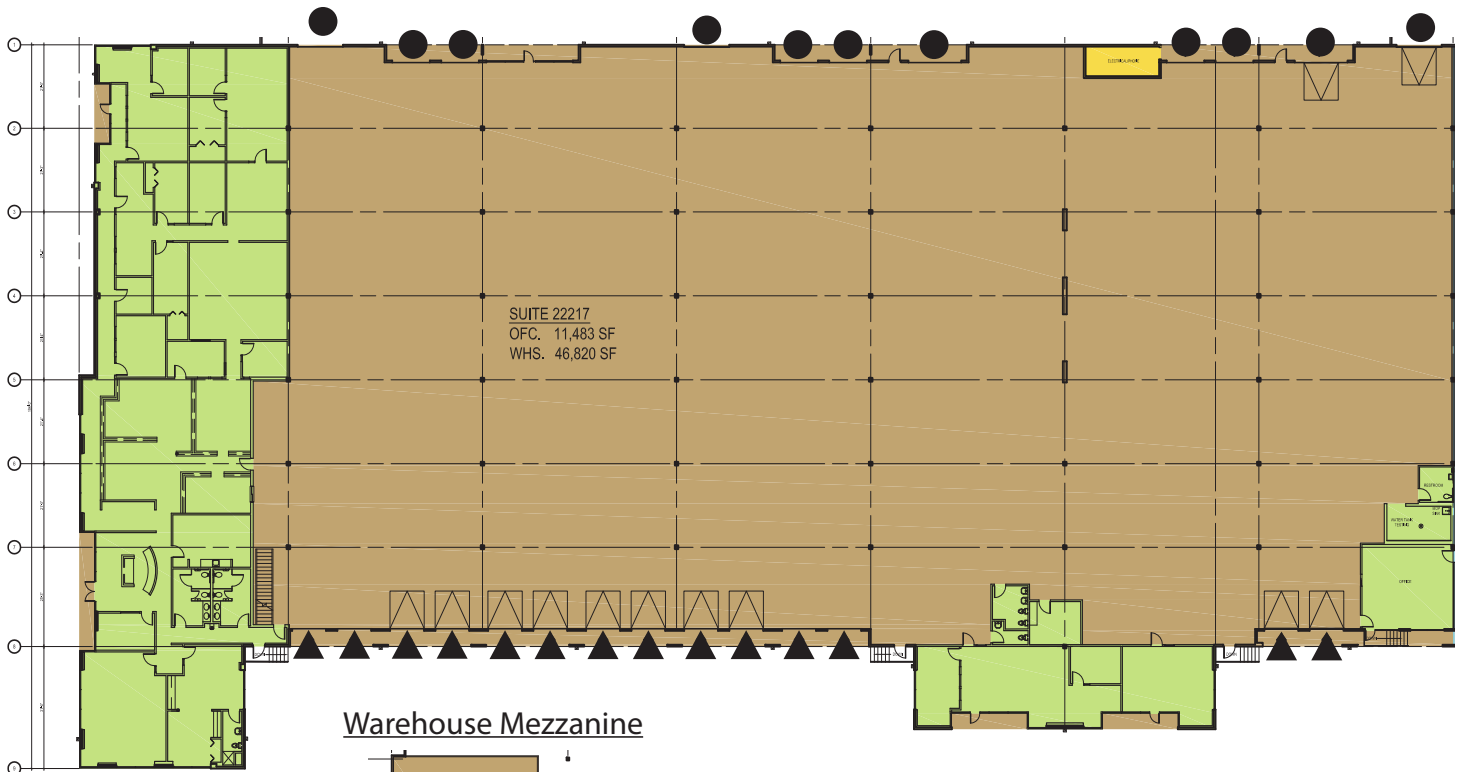
Owned by:



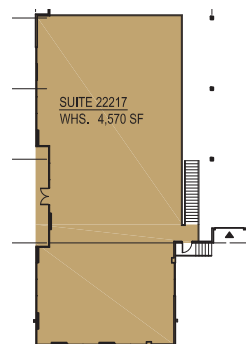
FOR LEASE

22217 68TH AVENUE SOUTH
KENT, WASHINGTON

VALLEY CORPORATE CENTER - BLDG. B



Warehouse Mezzanine



LEGEND

- ▲ Dock-high
- Drive-in
- Warehouse Area
- Office Area



Wilma Warshak, SIOR

wilma.warshak@wa-rea.com

P 206.838.5492

C 206.409.1432

Alana Garrett

alana.garrett@wa-rea.com

P 206.838.5492

C 858.722.5627

Jackson Peterson

jackson.peterson@wa-rea.com

P 206.838.5492

